



FOCUS, PROGRESS, THE WAY FORWARD

Government of the Northwest
Territories Updates to Northern Air
Transport Association

April 27, 2016



FOCUS

- Maximize Infrastructure Investment
 - Embrace New Technologies
 - Emergency Planning, Continuous Improvement and Community Capacity Building
 - Advocate for Northern Regulatory Perspective
 - Balance Stakeholder Needs
-
- All while met with hard choices about the way forward in the face of resources challenges



PROGRESS

- TRACR II LTE
- NEW/IMPROVED INFRASTRUCTURE
- UAV SURVEYS
- CTA PANEL RESULTS

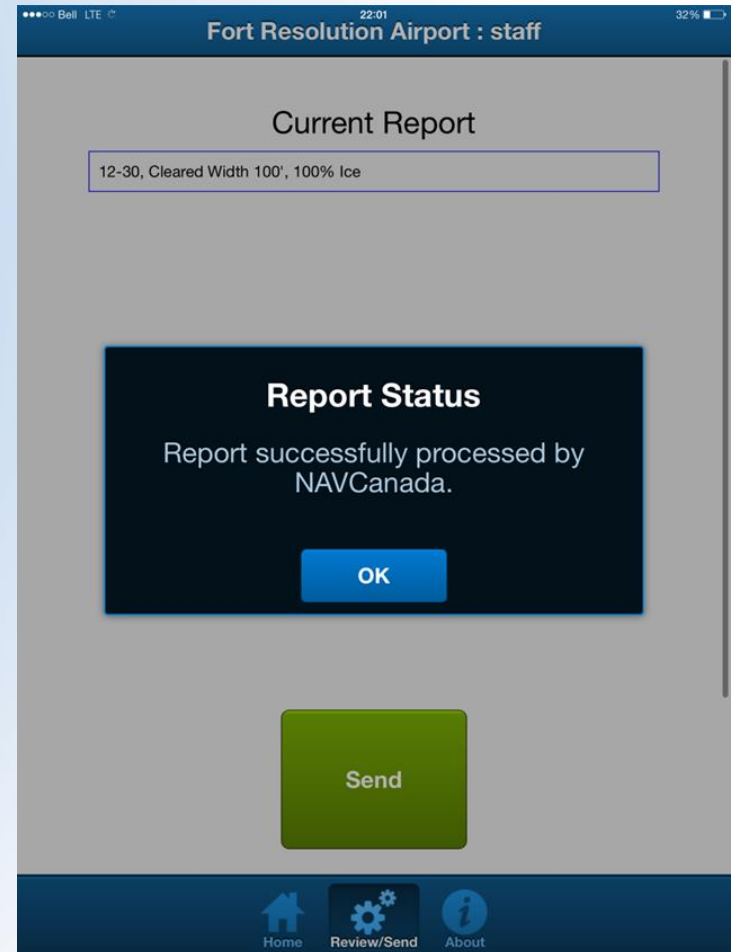
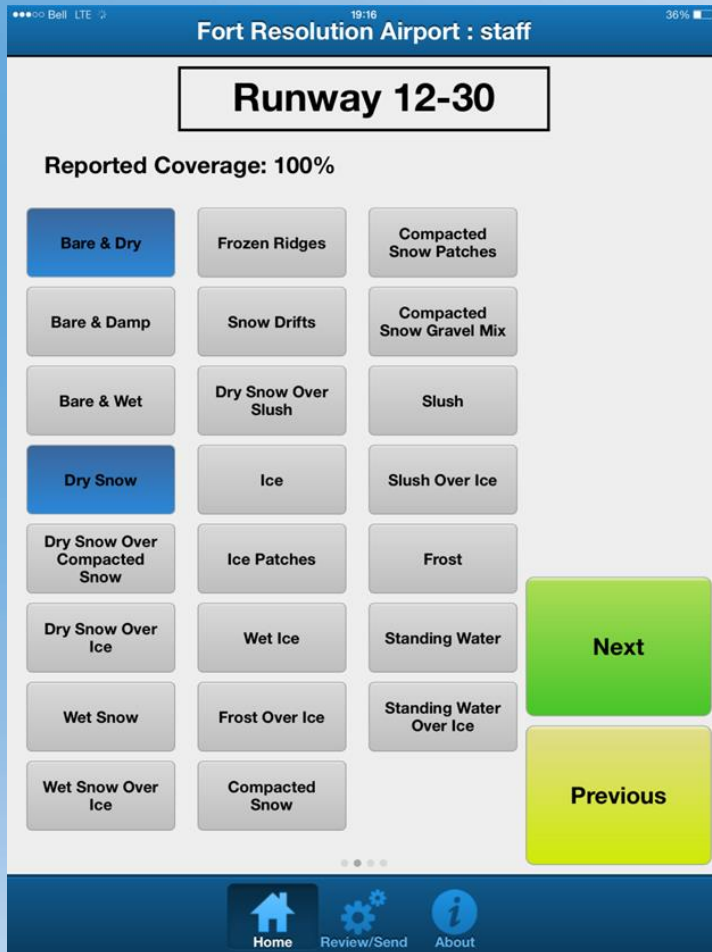


TRACR LTE

- Completed 1 Year Pilot Project spring 2015;
- All 21 B&C airports now reporting via tablets;
- Replaced the traditional faxing to North Bay which results in timely dissemination (under one minute);
- The tablet also used to email Daily Physical Inspection to Airport Manager responsible for that airport;
- Maintainers have easily adapted and are pleased with the system;
- If Air Carriers choose to be on distribution list for any particular airport they can contact :
 - Alec Hanna @ alec_hanna@gov.nt.ca



SAMPLE SCREENSHOTS





New/Improved Infrastructure





New/Improved Infrastructure





New/Improved Infrastructure





New/Improved Infrastructure



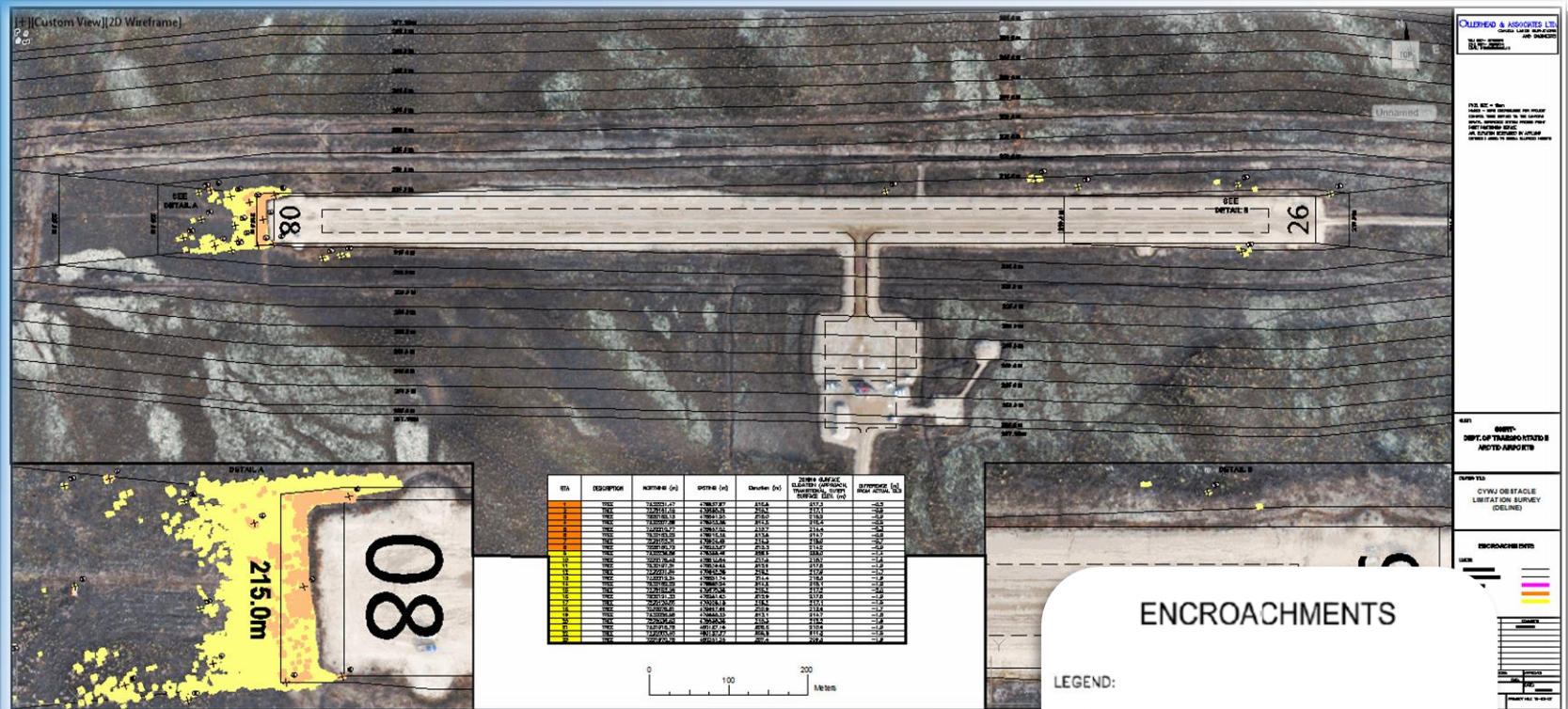


UAV

- Close coordination with Transport Canada (SFOC)
- Acquisition time and cost low
- Orthophoto and point cloud can be produced within two weeks
- Traditional acquisition of orthophoto and basic line work within one year
- Additional data detail available as needed
- Trees heights behind the tree line definable



Deline orthophoto & tree height analysis





Deline orthophoto ground objects



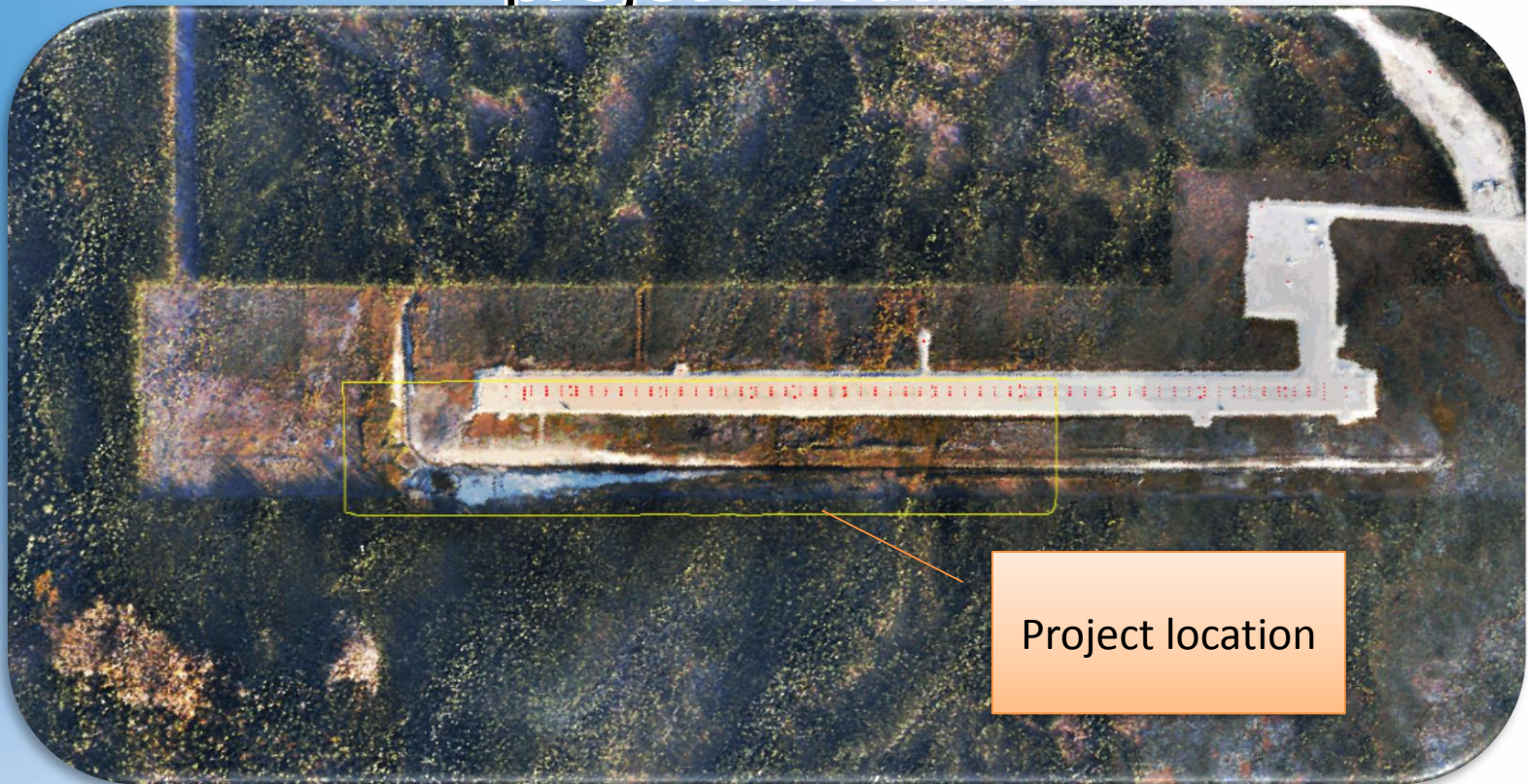


Trout Lake orthophoto with conventional survey points





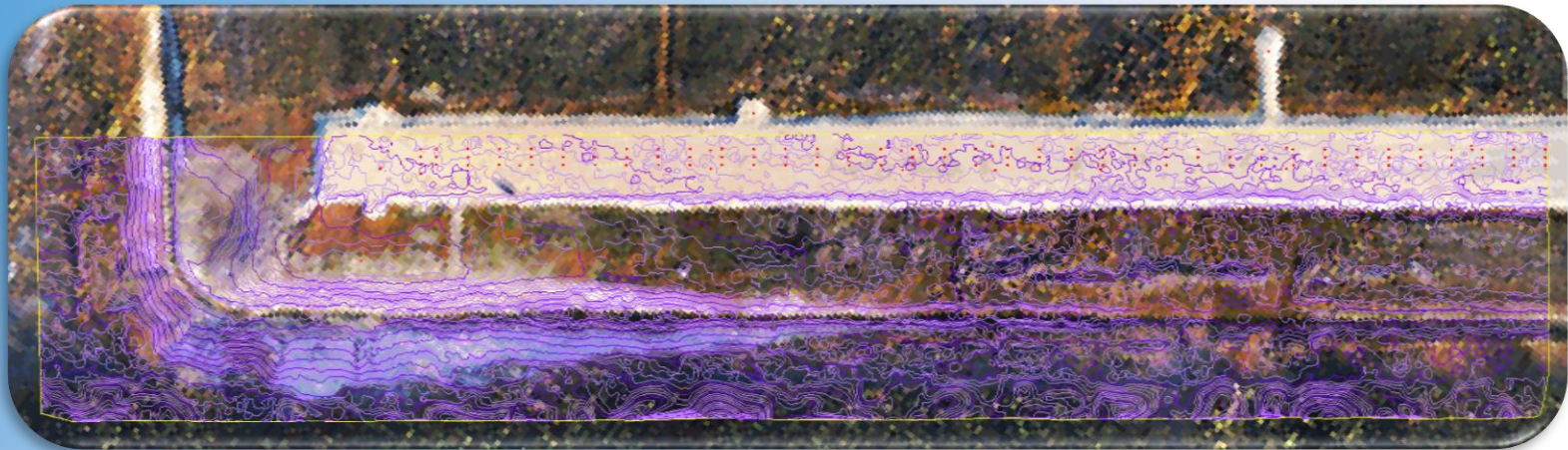
Trout Lake project location





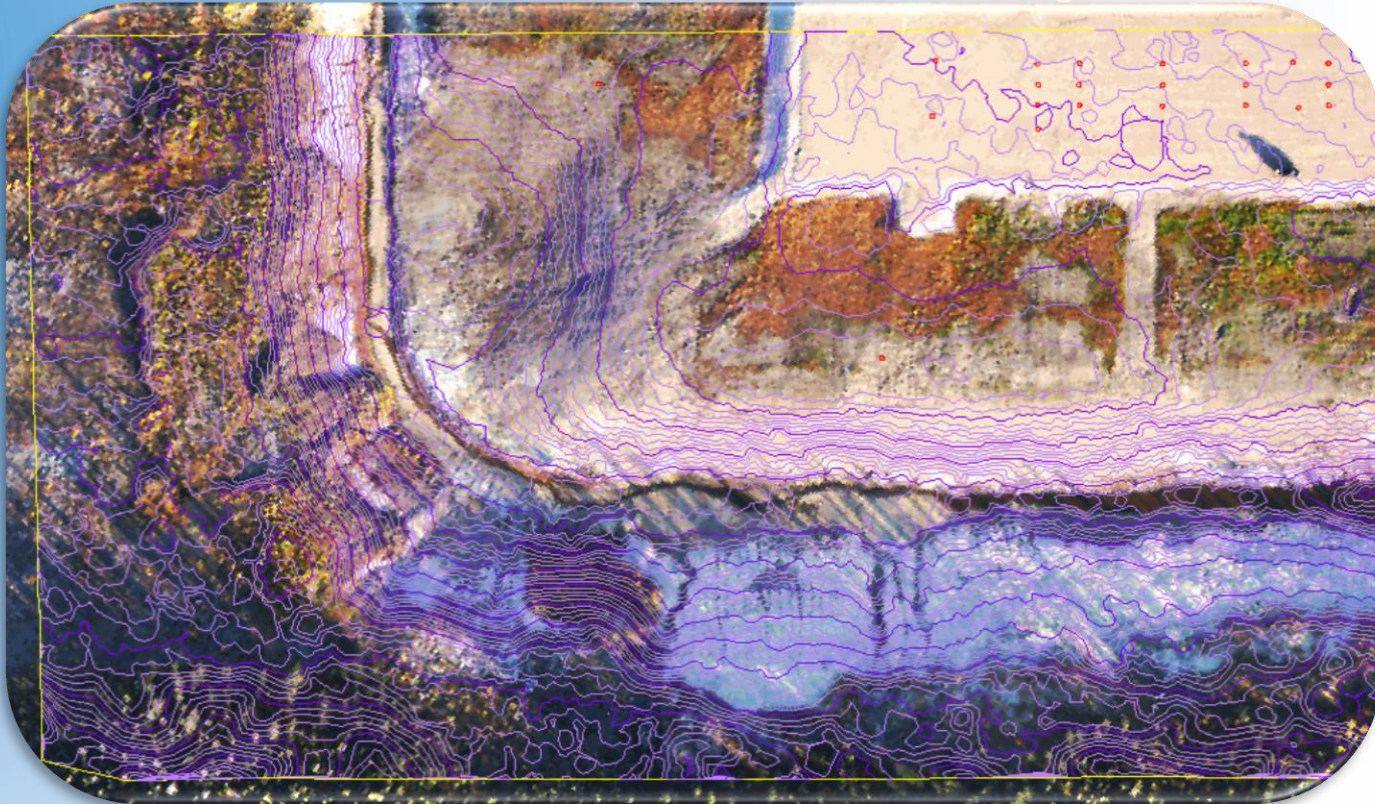
Trout Lake

additional contour data in project location



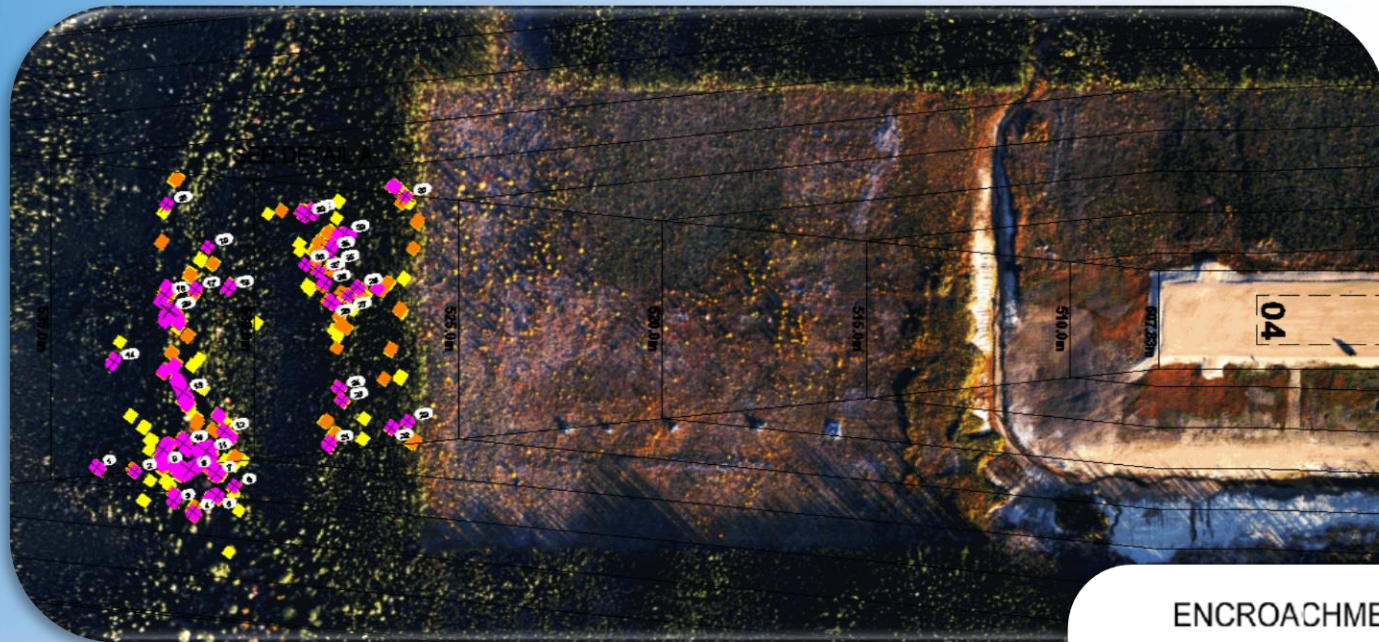


Trout Lake contour data close up





Trout Lake trees beyond the tree line



ENCROACHMENTS

LEGEND:

APPROACH SLOPE	———
TRANSITIONAL SLOPE	———
OLS ACTUAL	■
OLS -1m	■
OLS -2m	■



Fort Providence UAV point data





CTA PANEL RESULTS

- Special Northern focus, unique challenges of living and travelling to the north
- Recognition of the importance of airports to economic and resource development
- Unique challenges in regulatory environment for mandated safety and security measures
- Impact of climate change on infrastructure
- Targeted and sustained financial support



THE WAY FORWARD

- EMERGENCY EXERCISES
- PROJECTS PLANNED AND IN PROGRESS
- YELLOWKNIFE AIRPORT
- DOT'S STRATEGIC PLAN



EMERGENCY EXERCISES

- The Department of Transportation, with support from Municipal and Community Affairs' (MACA) has developed and implemented a new emergency exercise approach for small communities which provides critical community-based emergency response training followed immediately by a live exercise.

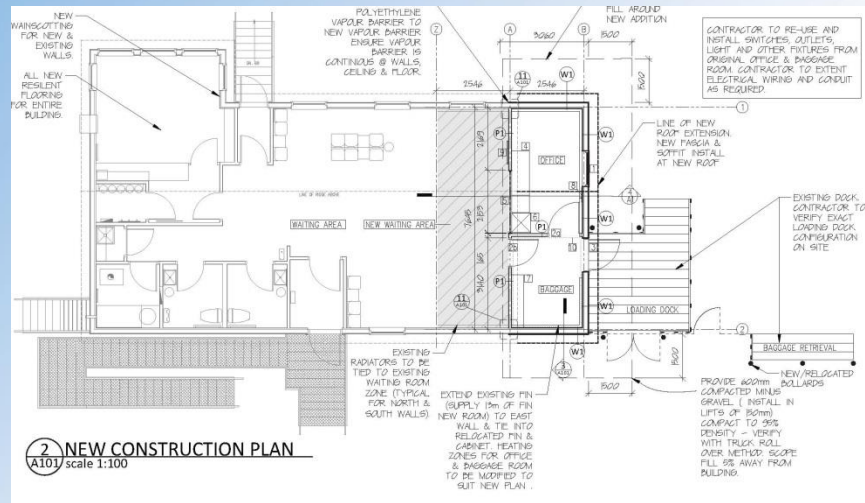
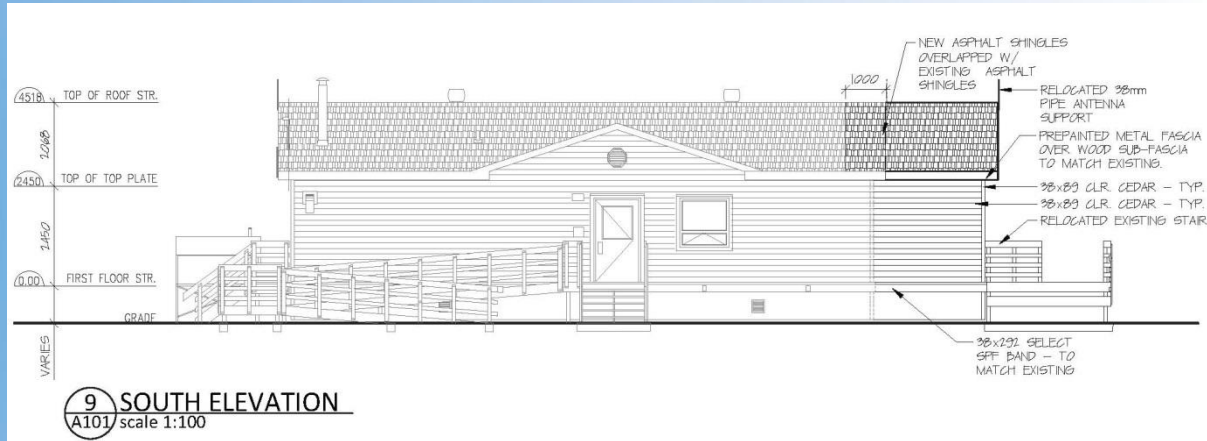


EMERGENCY EXERCISES

- The training consists of On-Scene Controller, triage, packaging and transport, all of which is tailored to meet the specific needs of our community responders.
- As of January 1st 2016, 14 communities and 157 people received the training including the basic first responder training
- This year's exercises in Inuvik, Norman Wells, Tuktoyaktuk, Ulukhaktok, Whatì will continue with this approach



CURRENT PROJECTS



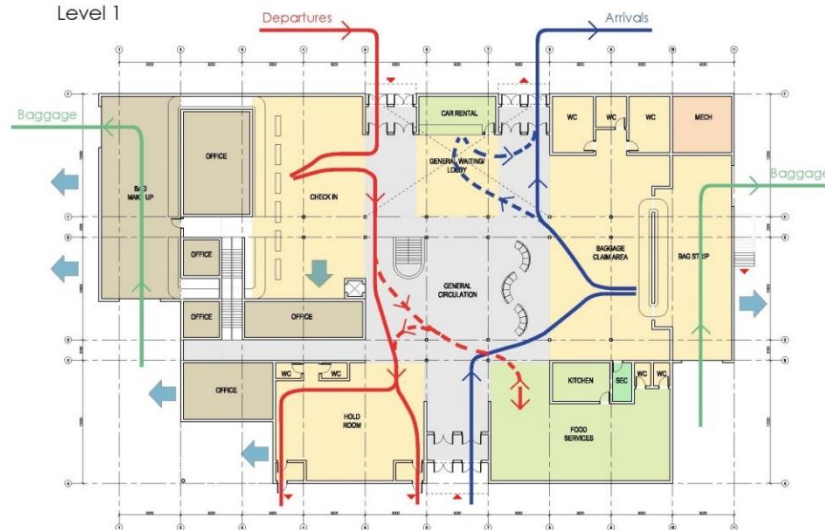


CURRENT PROJECTS



Sketch Concept

Level 1





YELLOWKNIFE AIRPORT

- The Department recently undertook two studies
 - YZF Governance Review
 - YZF Economic Analysis
- Findings
 - 1000 people are directly employed by activity at the YZF
 - 2000 jobs in a number of sectors are supported by YZF.
 - The total economic impact, including supplier industries is \$171 million in direct GDP.
 - Activity at YZF contributes over \$45 million in various forms or taxes.
 - YZF improves connectivity to Canada and the world and acts as a catalyst to enhance business and tourism growth.



YELLOWKNIFE AIRPORT

- YZF must be positioned to respond to local economic needs and priorities resulting in
 - economic development,
 - increased responsiveness to customer service,
 - operational efficiencies,
 - timely infrastructure improvements and
 - the creation of a more predictable business environment for airlines and other airport users.
- Over the next 6 months, GNWT will continue to review opportunities for YZF to be more self-sustaining and self-directed



CONNECTING US

- In 2015 DOT released its Strategic Plan: Connecting Us
- Acknowledges the aged and underdeveloped system, the resources and natural pressures, regulatory regimes and the new technologies
- Lays out a framework to address our challenges, capitalize on our opportunities and embrace innovation



CONNECTING US

- Priorities will focus on
 - Continue maintaining and upgrading infrastructure
 - Secure long term funding to address needs
 - Promote and capture partnership opportunities
 - Advocate for improved transportation connection
 - Advocate for program and regulatory improvements that support Northern systems
 - Implement Climate Change Adaptation Plan



CONNECTING US

- Appreciate the input of our many transportation partners in the plan
- Good to see close linkages of our plan to the findings from the CTA Panel Review



QUESTIONS